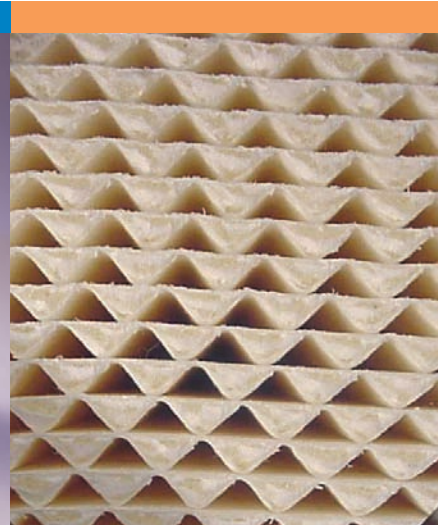


## PSD Air Cleaners with PowerCore™ Filtration Technology



PSD08 and PSD09 available now, larger models for higher airflow (up to 1060 cfm) available soon!

### Applications

- Off-road equipment operating in medium-dust conditions with engine airflow ranges up to 370 cfm (PSD08 and PSD09)
- Obround housing shape allows for a narrow or wide mounting orientation. Models include end filter service access and side filter service access
- Sustained temperature tolerance: -40° to 180°F / -40° to 82°C

### Features

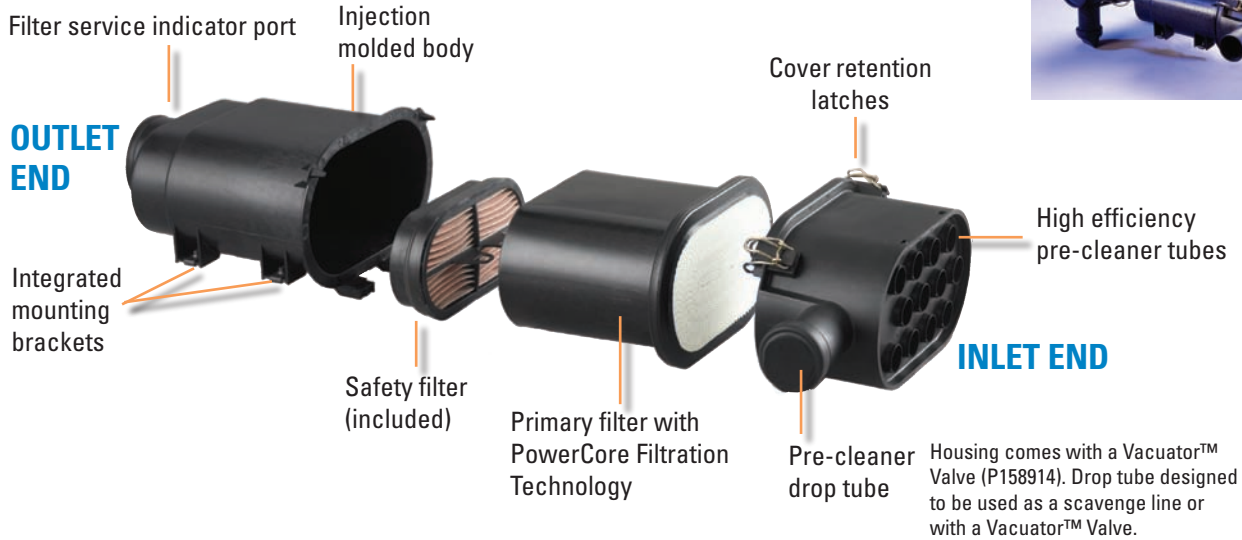
- PowerCore air cleaners are more compact at a given performance level than standard pleated filters
- Improved engine protection: no media movement, expansion, contraction or bunching
- Improved contaminant encapsulation: dust and dirt stay contained in filter during service

- Improved filtration efficiency:
  - Three times more efficient than the average conventional pleated filter
  - PowerCore™ Filtration Technology with high efficiency pre-cleaner tubes improve engine protection
- Improved handling and maintenance: lighter and smaller, changing filters is a snap
- Improved filter disposal ease: no metal, incinerable
- Filters easily serviced with clamp-on cover design
- Depending on the installation orientation, can be used with Vacuator™ Valve or with scavenge line
- Mounting bracket built-in to air cleaner body: eliminates the need for separate mounting bands

**Over 1.8 million PowerCore™ units have been installed since 1999!**

# Service Access on Inlet End - PSD08

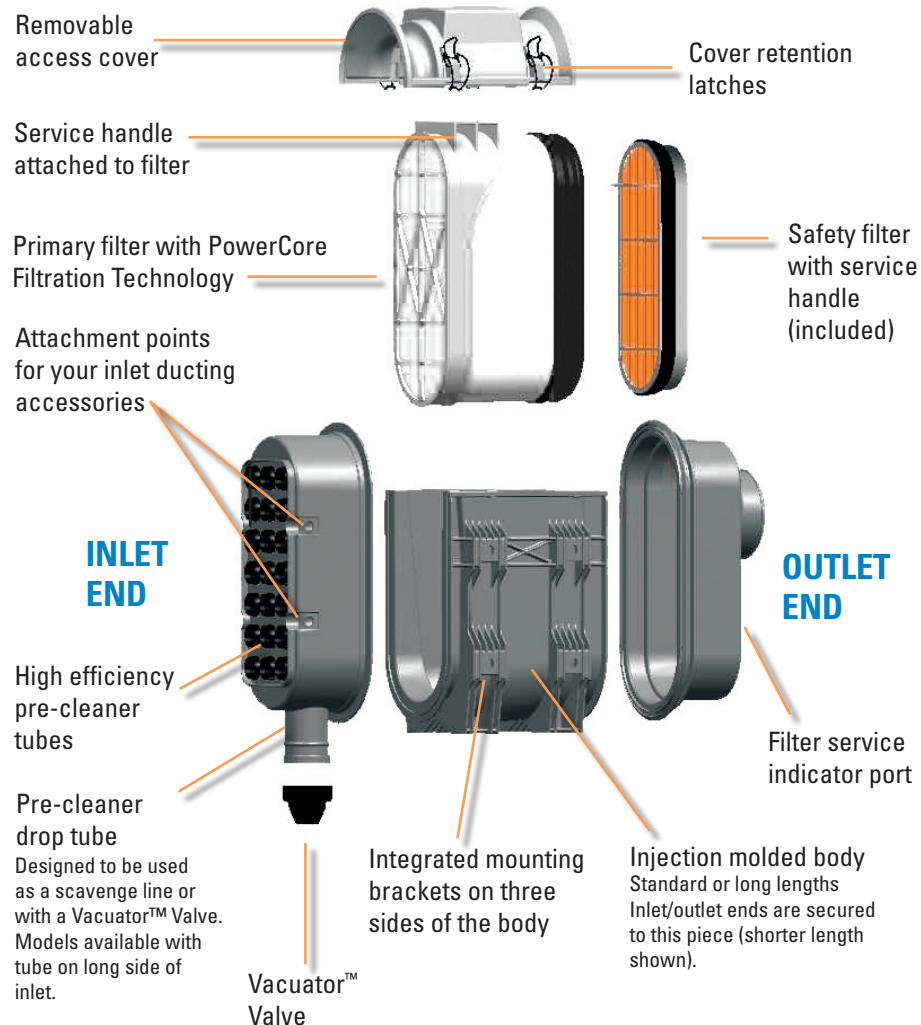
Exploded view is of D080020. For tube on long side of inlet end (opposite clamps), consider D080026.



This design offers the greatest amount of installation flexibility for equipment manufacturers.

# Service Access on Side - PSD09

Exploded view is of D090019 model. For tube on long side of inlet end, consider D090020 or D090022.



# PowerCore™ Filtration Technology Delivers Improved Filtration Performance

## Greater efficiency

The straight-through fluted design of PowerCore Filtration Technology is three times more efficient than average conventional pleated filters

## Engine protection

No media movement, expansion, contraction or bunching, with less dust and dirt passed on to the engine

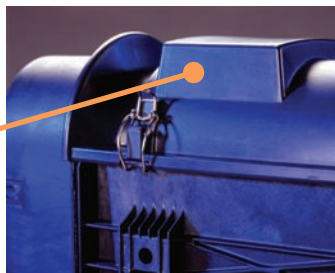
## Contaminant encapsulation

Dust and dirt won't dislodge during servicing

## Simple Maintenance

Lighter and smaller, changing filters is a snap and they are metal-free

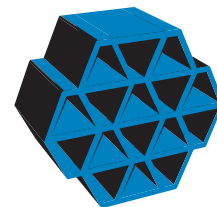
Built-in service handle is attached directly to the filter



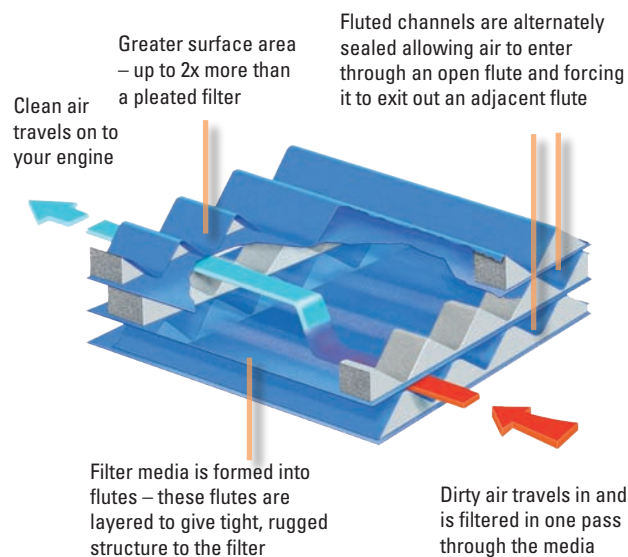
## Design Differentiation

The design of the U.S. and internationally patented housings, filters and filter media are key to Donaldson® PowerCore Filtration Technology (additional patents pending).

Donaldson has been manufacturing air cleaners with PowerCore Filtration Technology since 1999. There are over 1,800,000 units installed on various types of equipment throughout the world.

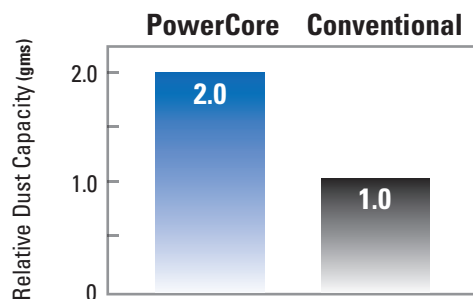


**PowerCore™**  
A DONALDSON FILTRATION TECHNOLOGY



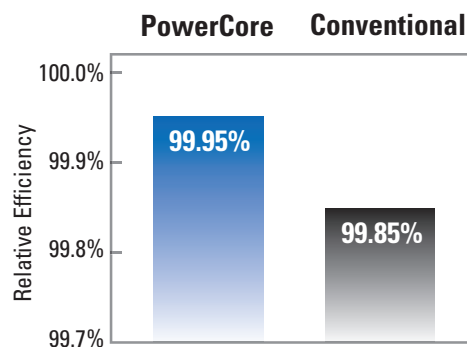
## Dust Holding Capacity

Gain over 100% more dust holding capacity in a given volume.

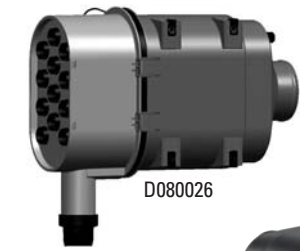


## Overall Efficiency

Improved filtration efficiency.



# Service Access on Inlet End

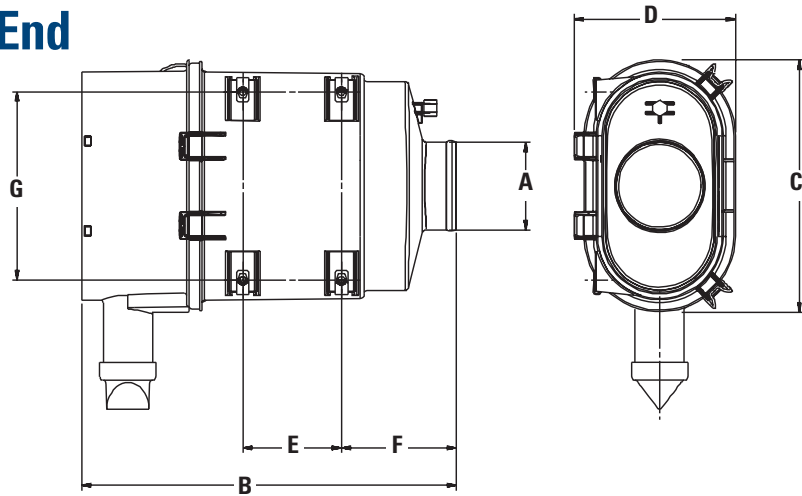


D080026

Assembly Weight  
2.2 kg.  
4.8 lbs.



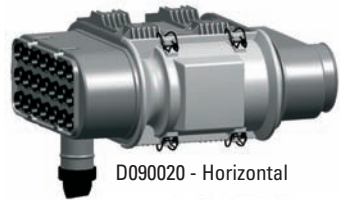
D080020



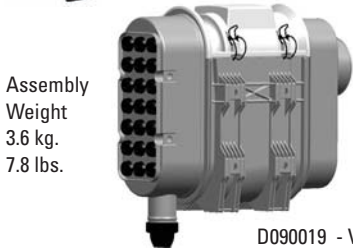
Airflow Range (cfm)			Housing Part No.	A		B		C		D		E		F		G	
Low	Mid	High		mm	in.	mm	in.	mm	in.	mm	in.	mm	in.	mm	in.	mm	in.
176 cfm @ 6" H <sub>2</sub> O	206 cfm @ 8" H <sub>2</sub> O	232 cfm @ 10" H <sub>2</sub> O	D080020 Horizontal	89	3.50	380	14.97	256	10.07	154	6.05	100	3.94	117	4.59	191	7.50
			D080026 Vertical														

PSD08 Service Parts: Primary Air Filter - P608533; Safety Filter - P600975; and Vacuator™ Valve - P158914

# Service Access on Side

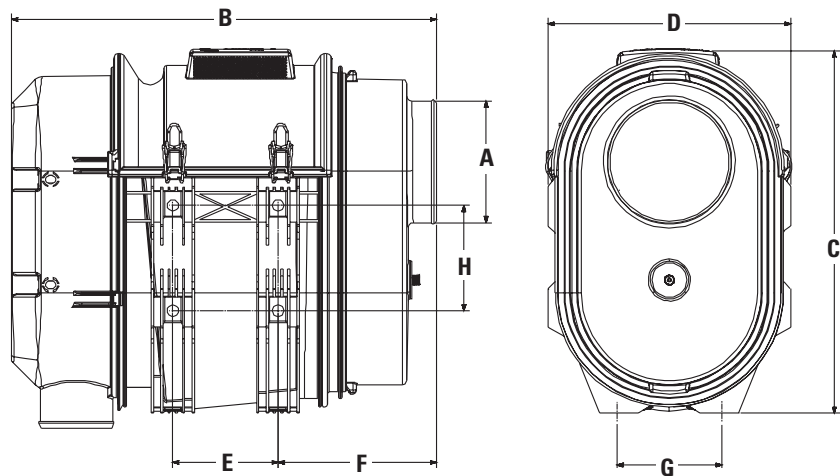


D090020 - Horizontal



D090019 - Vertical

Assembly Weight  
3.6 kg.  
7.8 lbs.



Airflow Range			Housing Part No.	A		B		C		D		E		F		G		H	
Low	Mid	High		mm	in.	mm	in.	mm	in.	mm	in.	mm	in.	mm	in.	mm	in.	mm	in.
255 cfm @ 6" H <sub>2</sub> O	300 cfm @ 8" H <sub>2</sub> O	340 cfm @ 10" H <sub>2</sub> O	D090019 Vertical	102	4.00	432	17.00	363	14.31	180	7.09	110	4.33	173	6.83	100	3.94	130	5.12
			D090020 Horizontal									132	5.20						
	320 cfm @ 9" H <sub>2</sub> O	370 cfm @ 12" H <sub>2</sub> O	D090021 Vertical			532	20.96	132	5.20										
			D090022 Horizontal			532	20.96	132	5.20										

Service Parts: D090019/D090020 Assembly - Primary Air Filter - P608665; Safety Filter - P606121; and Vacuator™ Valve - P158914  
D090021/D090022 Assembly - Primary Air Filter - P608675; Safety Filter - P606121; and Vacuator™ Valve - P158914



Donaldson

Donaldson Company, Inc.  
Minneapolis, MN  
55440-1299

www.donaldson.com

North & South America  
800-374-1374

Brochure No. F111160 (12/05)

© 2005 Printed in the U.S.A.  
Equal Opportunity Employer  
Donaldson Company, Inc. reserves the right to change or discontinue any model or specification at any time and without notice.